



Wall mount is optional accessory



Huddle room set-up guide

What is a huddle room?

A huddle room is a small, easily accessible meeting space with informal seating, ideally equipped with audio, video camera and screen capabilities, in order to enable functional working meetings. For a minor investment, it is possible to create a huddle room setup which is highly scalable, using simple, low maintenance solutions which users can easily operate themselves.

A well-equipped huddle room is a useful tool for bringing remote workers together, whilst also allowing businesses to better utilize their available office space.

Huddle room characteristics

Room size	Equipment
<p>UP TO 17 m²</p>	<p>UP TO 8 SEATS</p>
	<p>SCREEN 22" - 55"</p>
	<p>VIDEO CAMERA</p>
	<p>SPEAKERPHONE</p>
	<p>WHITEBOARD</p>

Bring your huddle room to life with Jabra PanaCast and Speak 710

Jabra PanaCast is engineered to be the world's first 180° Panoramic-4K plug-and-play video solution. It is the perfect partner for the Jabra Speak Series, offering an unrivalled combination of crystal-clear audio and Panoramic-4K video.

Three 13-megapixel cameras and patented real-time video stitching technology create a more natural, inclusive view of the huddle room in Panoramic-4K.



The ideal huddle room set-up

To create an optimal huddle room experience, we recommend equipping your huddle room with a D-shaped table. By reducing the distance between the camera and the table to zero, you maximize your real estate without cutting anyone out of the picture. No blind spots, no wasted space.



Placement and positioning of the camera

We recommend placing the camera below the TV monitor, using the Jabra PanaCast wall mount*. If fixing the PanaCast to the wall directly below the TV is not an option, you may also use the Jabra PanaCast table stand* as an alternative.

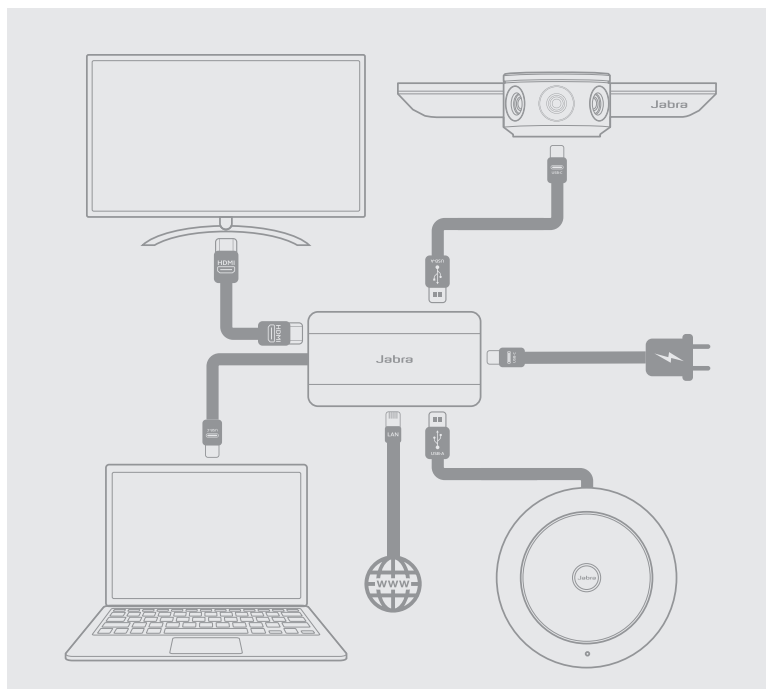
As a general rule, you should position the camera about 90 cm/3 ft off the ground. This will provide the best display of the room at eye level. To avoid distortion of the video quality, the camera should be roughly 45cm/18 inches away from the closest meeting participant.

How to connect

Plug-and-play technology lets you collaborate with others quickly and easily. To provide optimal connectivity when using PanaCast and Speak together, we developed the Jabra Hub*. The hub is a stationary in-room accessory which simplifies cable management and should ideally be fixed under the meeting room table. It provides all necessary inputs and outputs to streamline media management, so the end-user only needs to plug in one cable to start their meeting.

The Jabra Hub provides following connectivity:

- 1 m/ 40 inches USB-C cable for PC-connection
- Two USB-A ports for connecting the Jabra PanaCast and a Jabra Speak
- Ethernet port
- HDMI port



Accessories to Jabra PanaCast

Wall mount

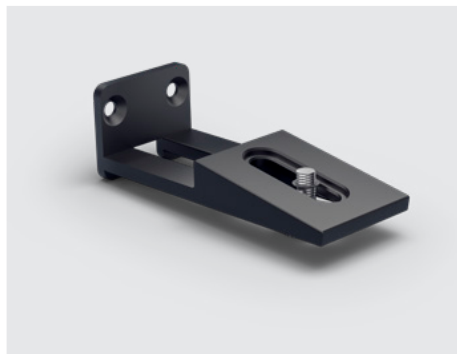


Table stand



Hub



*Optional accessory